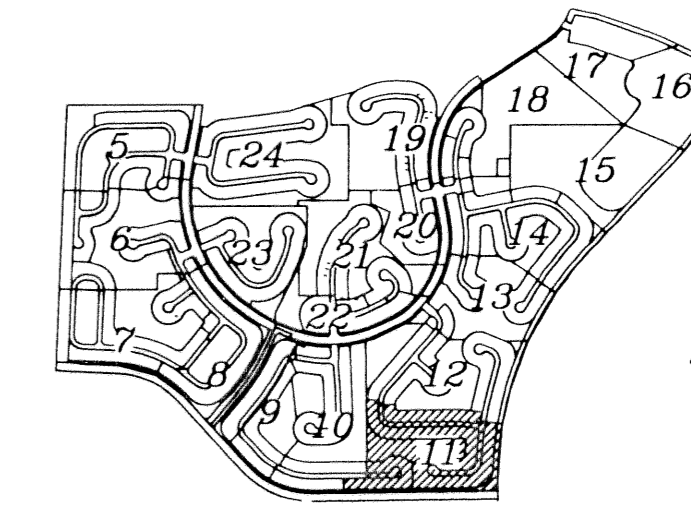


OLYMPIA - PLAT II

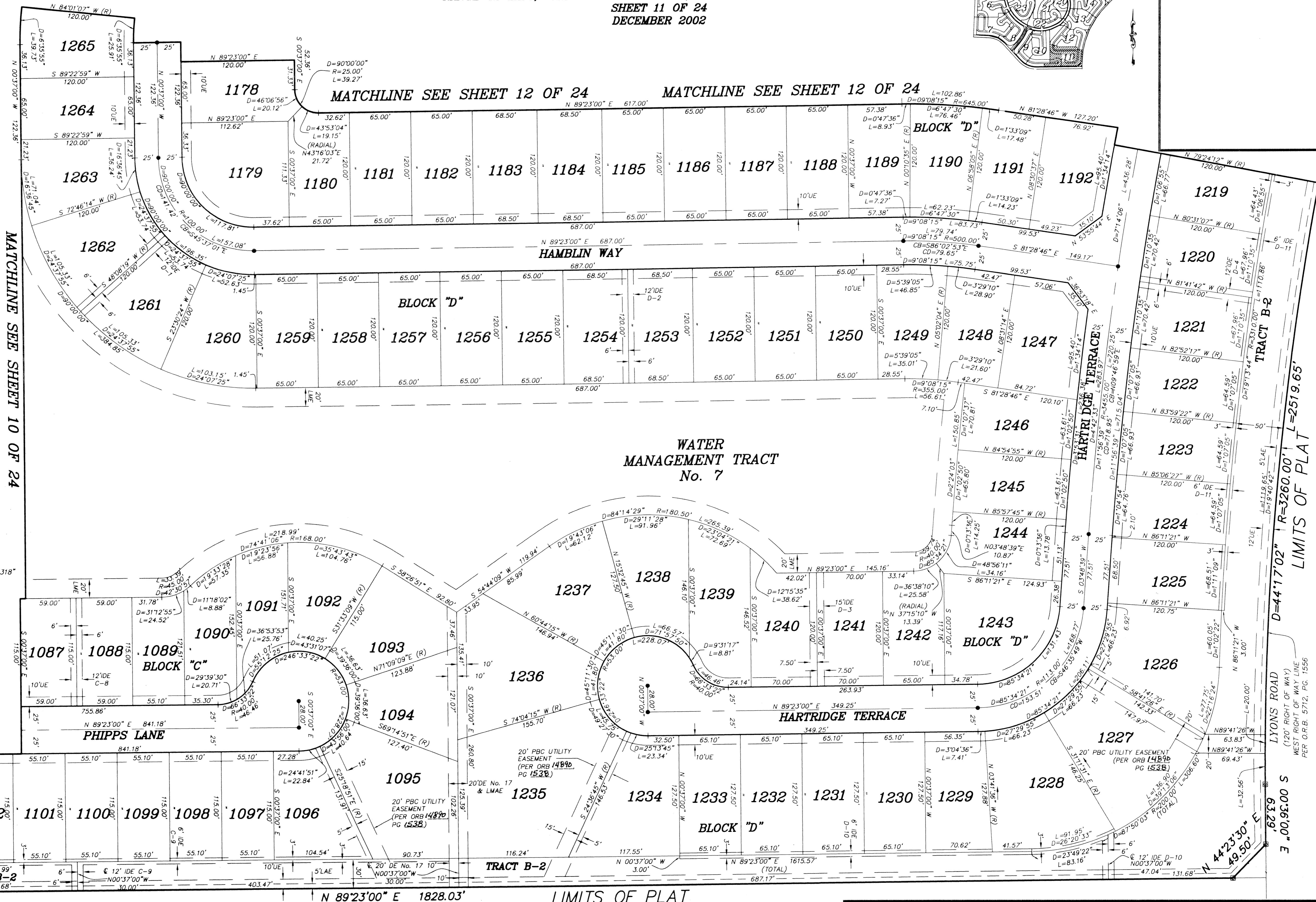
BEING A REPLAT OF A PORTION OF BLOCKS 19 AND 20 OF PALM BEACH FARMS COMPANY PLAT No. 3, AS RECORDED IN PLAT BOOK 2, PAGES 45 THROUGH 54 OF THE PUBLIC RECORDS OF PALM BEACH COUNTY FLORIDA. BEING IN PORTIONS OF SECTIONS 17, 18 AND 19, TOWNSHIP 44 SOUTH, RANGE 42 EAST, VILLAGE OF WELLINGTON, PALM BEACH COUNTY, FLORIDA

SHEET 11 OF 24
DECEMBER 2002

SHEET INDEX



11



- LEGEND:**
- D= DELTA (CENTRAL ANGLE)
 - L= LENGTH
 - R= RADIUS
 - PSM= PROFESSIONAL SURVEYOR AND MAPPER
 - PLS= PROFESSIONAL LAND SURVEYOR
 - LAE= LIMITED ACCESS EASEMENT
 - MREE= MAINTENANCE ROOF AND EAVES EASEMENT
 - UE= UTILITY EASEMENT
 - DE NO.1= DRAINAGE EASEMENT No. 1
 - IDE G-1= INTERIOR DRAINAGE EASEMENT No. G-1
 - WMT= WATER MANAGEMENT TRACT
 - ORB= OFFICIAL RECORD BOOK
 - P.B.= PLAT BOOK
 - PG.= PAGE
 - (R)= RADIAL
 - ⊙= SET PERMANENT REFERENCE MONUMENT "LB 4318" (UNLESS OTHERWISE NOTED)
 - = PERMANENT CONTROL POINT "LB 4318"
 - LME= LAKE MAINTENANCE EASEMENT
 - CL= CENTERLINE
 - LMAE= LAKE MAINTENANCE ACCESS EASEMENT
 - LWDD= LAKE WORTH DRAINAGE DISTRICT
 - CB= CHORD BEARING
 - CD= CHORD DISTANCE
 - PBC= PALM BEACH COUNTY

WATER MANAGEMENT TRACT No. 7

BLOCK "D"

BLOCK "C"

BLOCK "D"

LIMITS OF PLAT

LIMITS OF PLAT

OLYMPIA - PLAT II

NICK MILLER, INC.
Surveying & Mapping Consultants

SHEET NO. **11**

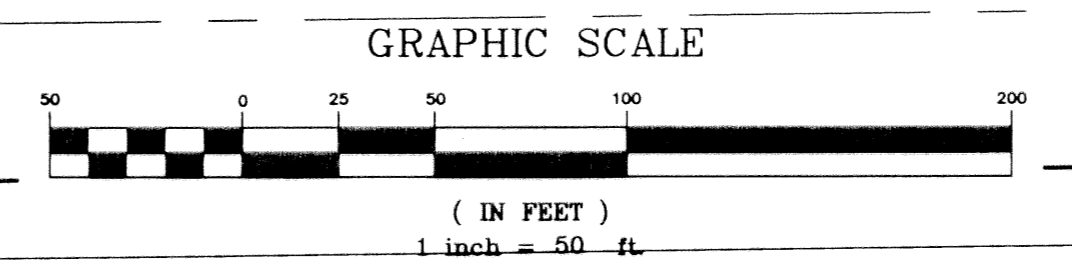
SCALE: 1" = 50'

DATE: DECEMBER 2002

JOB NO. 1008.044

FILE: PHASE II

2560 RCA BLVD.
PALM BEACH GARDENS, FLORIDA 33410
TEL 561 627-5200 FAX 561 627-0983
D.B.P.R. LICENSED BUSINESS No. 4318



PIERSON ROAD
(80' RIGHT OF WAY)
PER O.R.B. 1487b, PG. 1529

MATCHLINE SEE SHEET 10 OF 24

MATCHLINE SEE SHEET 12 OF 24

MATCHLINE SEE SHEET 12 OF 24

